

Osaka Chamber of Commerce and Industry(OCCI)

Supporting creation of innovation by promoting collaboration between startups and Osaka-based companies

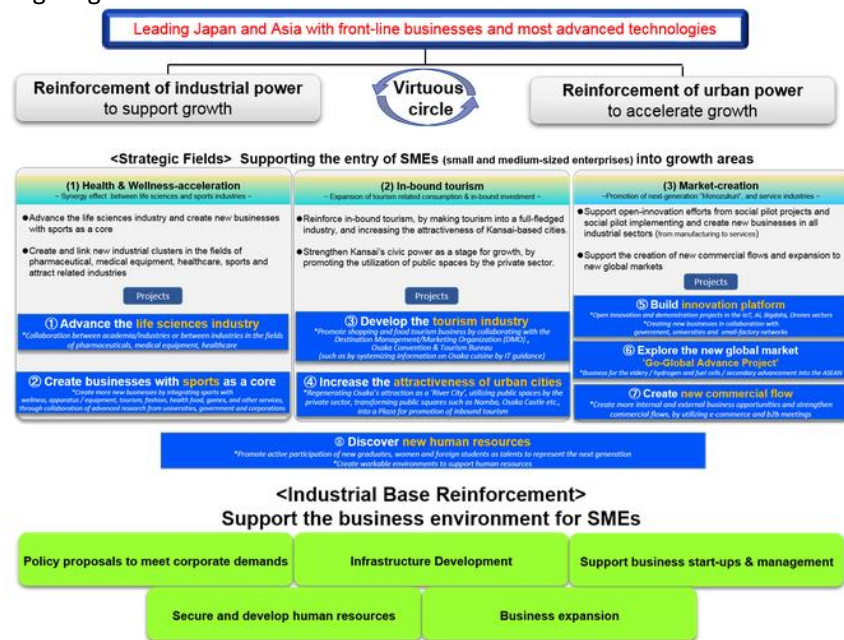
■ Initiatives for the entire startup

• About Osaka Chamber of Commerce and Industry

The OCCI is a regional comprehensive economic organization with about 30,000 members from various scales and industries. Committed to promoting the development of commerce and industry in the Osaka-Kansai region and regional revitalization, the OCCI implements a wide variety of activities and projects.

• Action Program “Tanto” Business Osaka

Since fiscal 2017, the OCCI has been implementing a medium-term action plan, “Tanto” Business Osaka. As one of the strategic projects under this plan, the OCCI is working to establish an innovation ecosystem where multiple actors—large companies, SMEs, startups, universities, public testing research institutes, government agencies, etc.—within the Kansai region gather and collaborate to drive innovation.



■ Main activities and case studies

• Urban Open Innovation Lab “Xport (Cross Port)”

Xport, established and operated jointly by the OCCI and Osaka Institute of Technology (OIT), supports problem-solving and business creation through open innovation involving various entities, such as large companies, SMEs, startups, and students.

Examples: Industry-academia collaborative project-based learning (PBL), “Business meet-up” sessions, networking programs

• Collaboration with Innovative Clusters

Aiming to make Osaka a global hub for startups seeking to expand into the global market, the OCCI provides various services, including mentoring for Japanese startups looking to expand overseas, inviting foreign startups to Japan, and dispatching business delegations to advanced innovation regions.

Examples: Go Global! Boot Camp, Global Innovation Forum, Overseas Startups Discovery Mission

• O-BIC (Osaka Business and Investment Center)

O-BIC provides one-stop support service for foreign companies planning to expand their businesses into Osaka.

Osaka Chamber of Commerce and Industry

Person in charge

(Ms.) Y. Nagoshi

E-mail

intl@osaka.cci.or.jp

TEL

+81-6-6944-6400

URL

<http://www.osaka.cci.or.jp/e/>