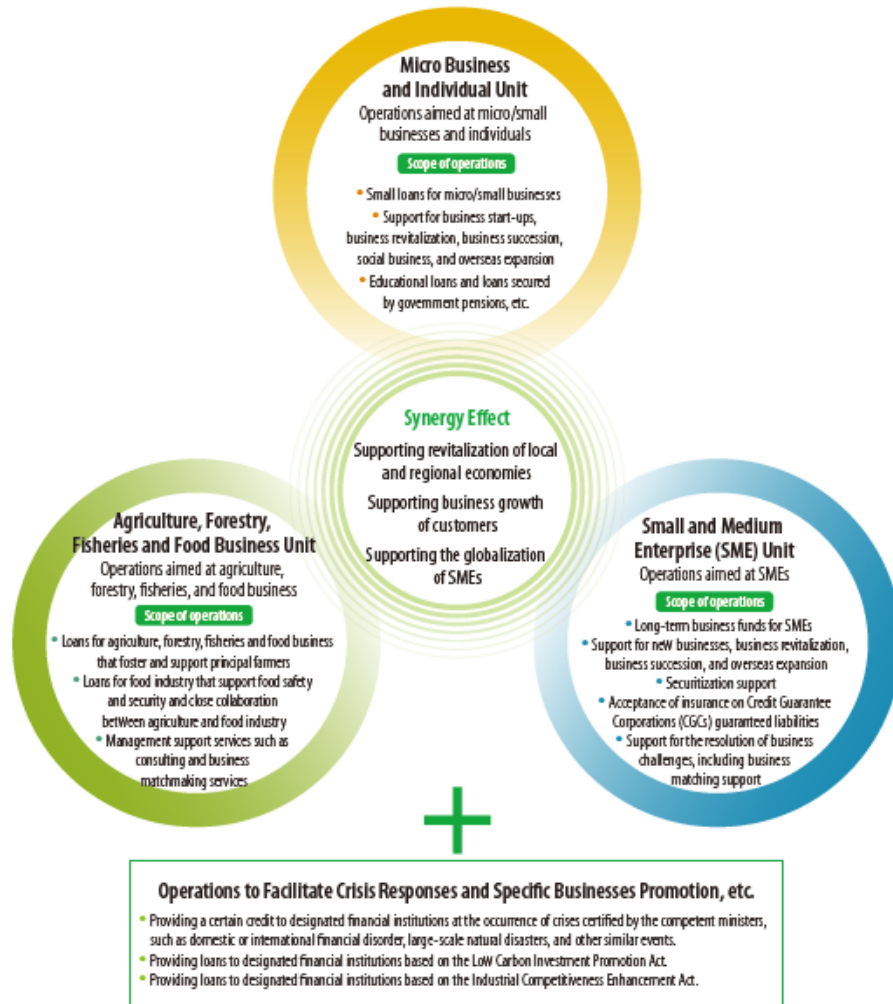


Major Business Operations of JFC

JFC is a policy-based financial institution that aims to complement financial activities carried out by private financial institutions and contributes to the improvement in the living standards of Japanese people.



Contributions to Strategic Fields of Growth, etc.

- Support for start-ups and new business

We are working on discovery and support for regional venture companies by holding information exchange events and presentation events for venture support in local areas in cooperation with regional venture support institutions. The Micro Unit has established business start-up support center and business support plaza in Osaka. Through these facilities, we support a wide range of business start-ups and others attempting to start a second business.

- Support for overseas investment

The SME Unit provides active support for the overseas expansion of SMEs, such as providing Loans for Overseas Investment and Expansion, supporting the local currency denominated fundraising by SMEs' overseas subsidiaries and branches through the Standby Letter of Credit Program, offering management consulting services and holding business network meetings abroad.

- Support for new expansion by agricultural, forestry, and fisheries businesses.

Advisors in the fields of agricultural, forestry, and fisheries respond to consultation requests from customers concerning all aspects of their business management.

Japan Finance Corporation	
Person in charge	T.Hasegawa (Mr.)
E-mail	hasegawa-tak@jfc.co.jp
TEL	+81 -(0)6-6314-7615
URL	https://www.jfc.go.jp/