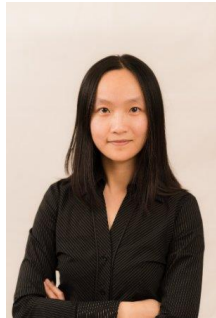


# DataMesh



COO Nikita Huang



Region  
**Asia**

Founding  
year  
**2014**

Stage  
**Growth**

Number of  
employee  
**100+**

## Challenges / Problems

- Skill and Digital Gap: The industrial sector faces a shortage of tech-enabled workers and limited access to AI.
- Outdated Training & Knowledge Transfer: Traditional training and communication methods lead to operational inefficiencies
- Operational Complexity: Complex operations and evolving technologies create a demand for better efficiency and capabilities

## Proposed solutions

- A low-code industrial metaverse platform to revolutionize workflows and empower frontline workers with digital twins, spatial computing, and AI, streamlining complex processes to boost operational efficiency

## Competitive advantages

- Cost Effective: Low-code Designer and Template Library for creators
- Standards-Compliant: Industrial standards and Protocol supported
- Continuous Optimization: Digital Twin based operation simulation and AI/ML interface
- Instant ROI: OOTB frontline worker apps with XR capabilities offer immediate returns

## Looking for collaboration / partnership with:

- Reseller or SI partners specializing in AEC, telecom, manufacturing, and related sectors
- Cloud or telecom leaders, or accelerators closely aligned with advanced technologies like XR and digital twins
- Platform giants with business interests and an ecosystem in XR, AI, AR headsets, BIM, and building design

## Future business plans:

- Global Expansion and Product Innovation
- Industry Leadership and Thought Leadership
- Lead the industrial metaverse/simulation digital twin market, empowering 2 billion frontline workers with industrial metaverse solutions

